

# THE LYNDSLEY WHITTINGHAM FOUNDATION

P.O. BOX 42 • FRANKFORT IL 60423  
www.lyndseywhittinghamfoundation.com



## 5th Annual LYNZAPALOOZA New: The 2011 "Un-Fundraiser"

Dear Friend,

Over the past five years we have been blessed to have the overwhelming help and friendship of those of you who have supported this Foundation. Thanks to you, we have been able to achieve many of the goals we set out to accomplish in Lyndsey's memory. Our four Lynzapalooza events were very successful. They enabled us to establish scholarships and make donations to many children's causes in Lyndsey's name. We so appreciate the support of those who helped us keep Lyndsey's spirit alive through the following accomplishments:

- A \$100,000 commitment to Children's Memorial Hospital to support the Lyndsey Whittingham Memorial Fund and Neurocritical Care Program
- A beautiful plaque in tribute to Lyndsey hangs at St. Jude's Children's Research Hospital for our annual donations
- Frankfort School District 157-C Annual "Spirit" Scholarship is awarded each year at graduation
- \$10,000 in funding provided to the District 157-C Education Foundation for a Sensory System Room to enhance education for children at Chelsea Intermediate School
- A donation was made to fund The Infinity Mirror Exhibit at KidsWork Children's Museum

The Foundation and the Whittingham Family will continue the commitments to these causes in Lyndsey's name, however, we will do so with funds raised at past events and our new 2011 "Un-Fundraiser" effort. We will not be hosting the annual Lynzapalooza event this year but we are definitely continuing the Foundation and its goals. We may come back with some type of event in the future, but this year we offer our 2011 "Un-Fundraiser" to those who wish to donate to Lyndsey's Foundation and continue its goals.

Thank you for your amazing past support. If you wish to make a donation to the Foundation this year, you may do so by completing the form below and returning it with your check made payable to The Lyndsey Whittingham Foundation. Or you may donate by credit card through our secure PayPal account at [www.lyndseywhittinghamfoundation.com](http://www.lyndseywhittinghamfoundation.com). Donations are tax-deductible as allowed by law.

Again, we thank you for your support and friendship. It means the world to the Foundation and to Lyndsey's family. Because of your generosity, we have been able to complete so many beneficial efforts in Lyndsey's name.

Sincerely,  
THE LYNDSLEY WHITTINGHAM FOUNDATION

If you wish to make a donation to the Foundation's "Un-Fundraiser" this year, please complete this form & return it with your check to "The Lyndsey Whittingham Foundation." Please mail to: P.O. Box 42, Frankfort, IL 60423. Or you may make a donation online using a credit card on our secure PayPal account at [www.lyndseywhittinghamfoundation.com](http://www.lyndseywhittinghamfoundation.com). Donations are tax-deductible as allowed by law.

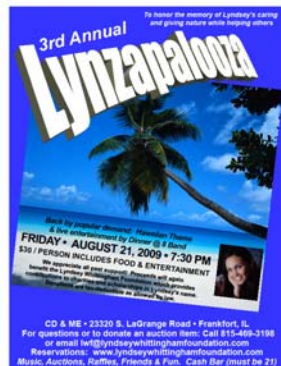
Name \_\_\_\_\_ Phone \_\_\_\_\_ Email \_\_\_\_\_  
Address \_\_\_\_\_



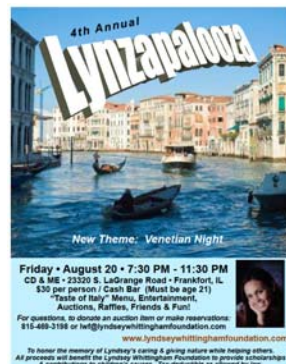
2007 - THANK YOU!



2008 - THANK YOU!



2009 - THANK YOU!



2010 - THANK YOU!